

Committed to higher education

Our approach to higher education
facilities delivery

Sir Robert McAlpine Education

Eaton Court
Maylands Ave
Hemel Hempstead
HP2 7TR

t: 0333 566 3444
e: hemel@srm.com



“

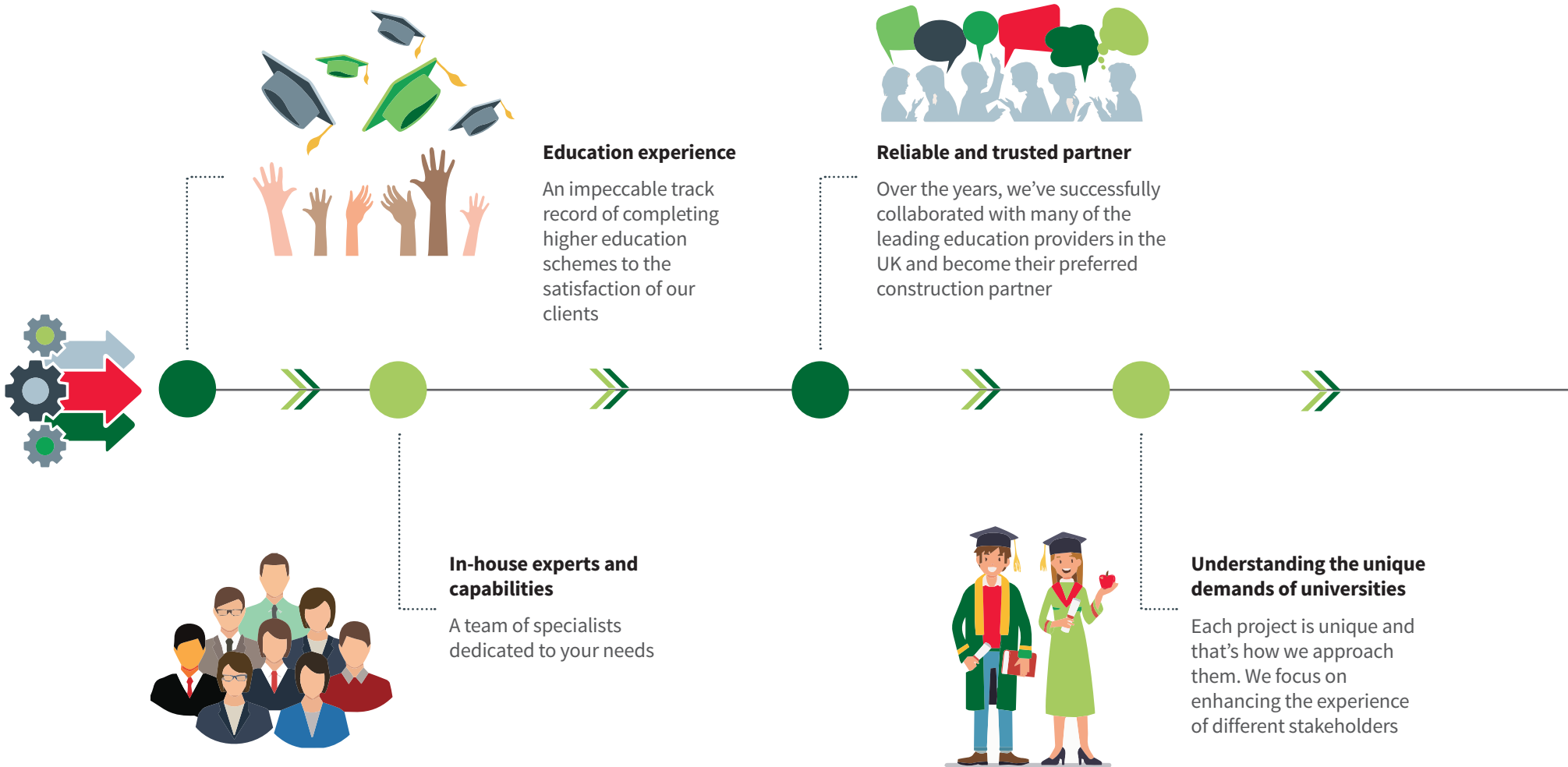
Here at Sir Robert McAlpine, we're proud to say that our track record in higher education goes back decades.

Most recently, we have successfully worked with many of the leading universities in the UK, including Newcastle, Durham, Edinburgh, Manchester Metropolitan and Oxford.



Higher education expertise that's built on knowledge and experience

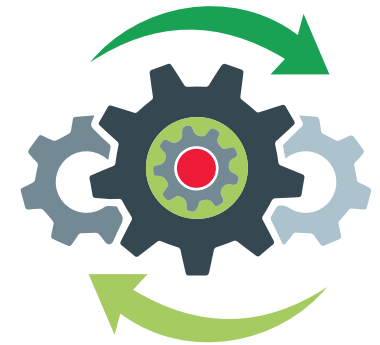
OUR FIRM COMMITMENT TO HIGHER EDUCATION





Winning awards and gaining recognition

We're proud to be recognised for our expertise in this field and building Britain's future heritage



Learning lessons post-pandemic

Applying 'lessons-learnt' in the post-Covid-19 era

Understanding what's important to our university partners

From inclusion of multiple stakeholder groups, the needs of academics and strong governance, to minimising disruption, enhancing the student experience and protecting reputation



“

Work with our dedicated Education Sector Team

Our commitment in HE is borne out by our continued activity in the education sector, which in recent years has approached 20% of our company's annual turnover.

Recognising the unique demands and special approach that helps make university projects a success, in 2010 we established a dedicated Education Sector Team to provide specialist input and understanding that informs and supports our engineering excellence, construction and project management expertise.

A responsible, innovative and rewarding sector in which to work, we're always eager to apply our expertise in providing facilities that help our universities make a difference. We want to create spaces where people learn, work and develop and places where world-leading research and innovation happens.



The education sector represents up to 20% of our annual turnover...



...and an education portfolio now exceeds £1.5bn

Education Sector Head - Russell Day



Starting a construction career that quickly moved into consultancy, Russell's experience spans over 30 years with Sir Robert McAlpine, working in the UK and overseas.

Specialising in education for the last 15 years, as Education Sector Head, he leads a national approach that brings expertise from across a wide range of other specialist fields.

Associated with more than 130 education projects, he has been instrumental in helping Sir Robert McAlpine build an education portfolio of over £1.5bn.

A motivator and problem solver at strategic and operational levels, he is renowned for his enthusiasm for introducing innovations and new ways of thinking into pedagogy, university design and construction.

“

Consistently delivering for universities across the UK

With an education portfolio that exceeds £1bn, we're proud to name 25 of the UK's HE institutions as customers and partners, which includes a place on a number of university frameworks and across the north east, as a partner on the NEUPC contractors framework for Newcastle University, Durham University, The University of Sunderland, Northumbria University and Teesside University.

Proud partnerships with
25 UK HE institutions



“

Understanding unique higher education demands

We've worked in many different university settings in city centres, campuses, science and innovation parks and also helped to establish new campuses, producing everything from new landmark buildings to the remodelling and refurbishing of existing assets. We also bring heritage expertise, having worked on some of the country's most important landmark buildings.

We've always kept the different groups of university users clearly in mind when collaborating with each university and helped to decide what works best for undergraduates, postgraduates, academic staff, professional staff, researchers and visitors.

Having built up a strong understanding of the complex and unique demands of the different groups, we know how to support and enhance their experience.



Leeds University Student Union Building



“

Different groups will have different demands

Our approach respects all subjects, all modes of learning, all student services and all parts of the estate.

We know that different students, faculties and subjects will hold different expectations from the environment and facilities available.

This is just one aspect of many different groups with differing demands: undergraduates and postgraduates will experience things in different ways, as will first-year undergraduates compared to final-year undergraduates. The differences don't end there: full-time, part-time and modular students view, use and experience the university estate in different ways.

“

Giving you confidence through our wide range of experience

Our impressive portfolio of university projects, on which we've built our expertise, has been recognised by our sector peers through awards and often cited as benchmarks. This gives our customers confidence that they're in safe hands and reflect the variety of services and facilities they need. These include: new campus and heart-of-campus anchor projects, complex research laboratories, performance spaces, city centre refurbishments, state-of-the-art lecture theatres, sports facilities, libraries, auditoriums – and many more besides.

We also have experience delivering departmental and programme-specific spaces such as biosciences, biology, chemistry, art, music, performing arts, maths and humanities. We've learned that as well as specific design and performance requirements, each department, school or faculty brings different groups of people whose contributions help build successful projects.



The Brooks Building, Manchester Metropolitan University



“

Understanding what's important to our university partners

Technological, economic and political challenges are at the forefront of educational changes. We have made it our mission to keep pace with them, with a well-grounded appreciation of the things that matter to our university customers and users when it comes to delivering effective education and research spaces. From inclusion of multiple stakeholder groups, the needs of academics and strong governance; minimising disruption, enhancing the student experience and protecting reputation; right through to accommodating pedagogical change and exploiting technological advancements. We're also familiar with the contribution and involvement that generous donors request when making philanthropic contributions.

“

Meeting the challenges of the post-pandemic HE landscape

Having been involved in some of the first purpose-built collaborative programme spaces, such as CUC Tremough, we understand both the challenges and the opportunities that are created by bringing multiple programmes and functions together into one facility.

Once the impact of Covid-19 is better understood, we'll resume our plan to launch research around the benefits of co-joined, collected, adjacent and collaborative education spaces. Having paused to reflect and adjust scope, we believe that their features will be of increasing value to our university partners in the post-pandemic world.



The Forum, University of Exeter, Devon



AUDE

Business Partner 2022-23



Supporting the sector

Building expertise comes not only from projects but also from our relationship with the Association of University Directors of Estates (AUDE), one which has gone from strength to strength since 2013, which was reflected in us becoming their Business Partner in 2018. This relationship continues to help us to deliver value to more and more AUDE members, for example: contributing toward soft landings, wellbeing, space management, net zero carbon, data innovation, technology in FM and other thought leadership events.



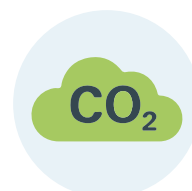
Soft landings



Wellbeing



Space management



Net zero carbon



Data innovation



Technology in FM



Mathematical Sciences and Computer Science Building, Durham University

Appointed by the University as Main Contractor, we have successfully delivered this £40m building, which forms part of a masterplan to provide improved infrastructure and additional teaching and research space.

The new, cutting-edge building provides office space to both professors and PhD students, in addition to having a number of specialist labs, including a heavy duty and an open IT Lab with designated server room. The building also houses a 120-seat tiered lecture theatre, tutorial rooms, cafe, flexible event space, enterprise hub, meeting rooms and breakout spaces.



Mathematical Sciences and Computer Science Building



Frederick Douglass Centre



Frederick Douglass Centre, Newcastle University

This £34 million project forms part of the major redevelopment of the Newcastle Brewery city centre site, to provide a Science Centre for Newcastle University. The work involved the construction of a 3,883m² building that houses a 750-seat auditorium, associated theatre blocks, a cafe and exhibition space within a four-storey building.

Construction consisted of piled foundations, a steel and in situ concrete structure with a sedum roof. Associated external works include substantial surface water attenuation features, with hard and soft landscaping.



The Henry Daysh Building



The Henry Daysh Building, Newcastle University

Newcastle University wanted to completely refurbish their Claremont and Daysh buildings, aiming to significantly improve the energy efficiency and sustainability of these buildings, originally built back in the 1960s. The complex is made up of three interconnected buildings – the Daysh building, 10-floor Claremont Tower and Claremont Bridge, which spans Claremont Road.

A key aim of this transformation was to ‘harmonise’ the three structures into a coherent single structure.



The Forum, University of Exeter

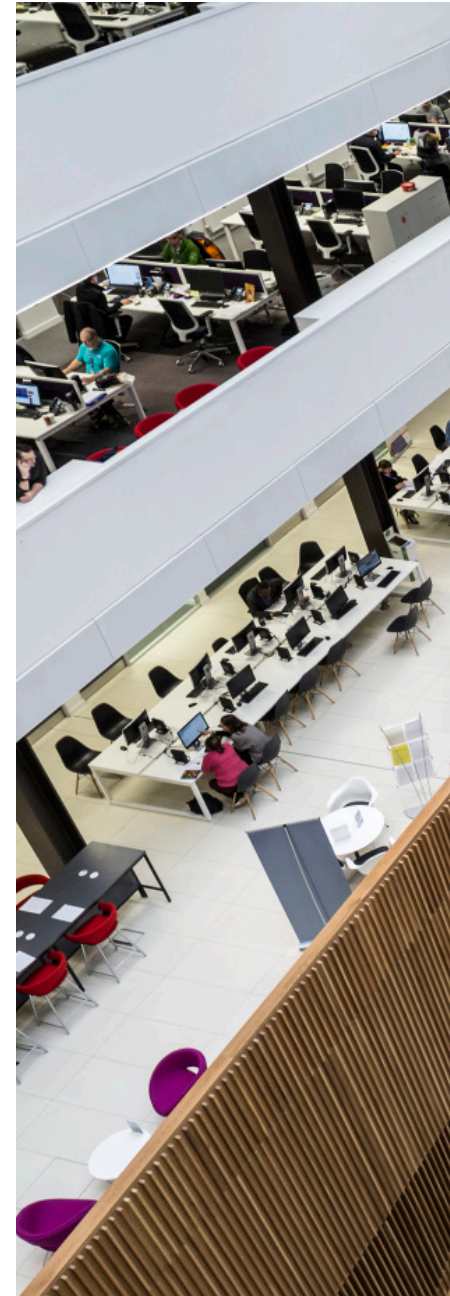
Comprising a mix of new and refurbished buildings linked by a signature, undulating timber gridshell roof, the Forum provides a bold new student-focused centrepiece to the University of Exeter's main Streatham Campus.

Facilities within the complex include a student services centre, two technology-rich 'exploration labs', 12 seminar rooms, a 400-seat lecture theatre, break-out spaces, retail and catering outlets and a reception.



The Forum, University of Exeter





City of Glasgow College



City of Glasgow College

The scheme involved the redevelopment of the College's sites on Cathedral Street and at Thistle Street to provide two campuses together capable of catering for 40,000 students and 1,200 staff.

With a migration plan that covered everything down to files on desks, we made the transition into the new buildings smooth and trouble-free. So staff and students were ready to get started – right from the first day of term.

“

The Glasgow School of Art

This award-winning new five-storey campus building in Garnethill is one of the most significant recent architectural projects in Scotland.

Standing opposite Charles Rennie Mackintosh's Grade A listed Glasgow School of Art, the Reid Building houses a range of studios and teaching facilities as well as communal areas and exhibition spaces.

A double basement is home to a 300-seat lecture theatre, a centralised workshop and assembly spaces. Substantial elements of the Grade C(S) listed Assembly Building were integrated into the structure to house the students' union.



The Glasgow School of Art



National Composite Centre



National Composite Centre, University of Bristol

Constructed against a fast-track programme, Phase 2 of the National Composites Centre doubles the size of the existing facility, making it one of the largest research and technology centres of its type in the world.

The Centre brings together companies and academics to develop new technologies for the design and rapid manufacture of high-quality composite products. The extension comprises a three-storey Knowledge and Innovation block linked to a single-storey, high volume manufacturing and large demonstration area.

“

Business School and Student Hub, Manchester Metropolitan University (MMU)

With the landmark architecture and polished finish of a corporate headquarters building, MMU's Business School and Student Hub provides an ideal learning environment for future captains of industry.

Located alongside the Mancunian Way, the trapezoid-shaped building is based around the concept of a faceted jewel, its unitised curtain wall system incorporating projecting dichroic glass fins which refract and reflect light.

Although not a contractual requirement, we helped the University meet its aspirations for BREEAM Excellent.



“

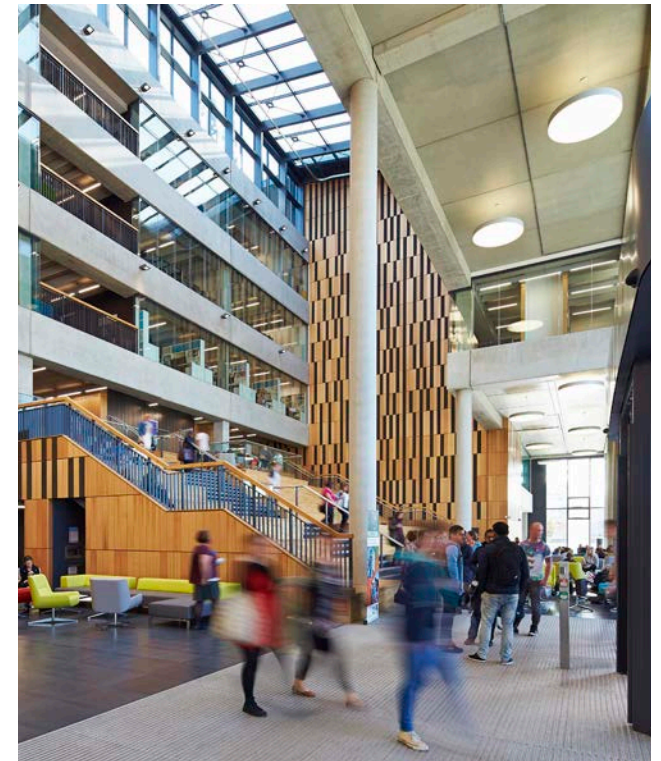
The Brooks Building, MMU

Delivery of this major new academic building realised MMU's ambition to provide world-class teaching and learning facilities, which act as an exemplar of sustainability and community engagement.

The frame for the academic building is constructed entirely from precast concrete, producing 85% less waste, something unique on a commercial project of this scale and complexity. This approach reaped the full benefit of 3D modelling, allowing offsite manufacture, and ensuring a factory controlled quality of finished product.



The Brooks Building





The Gradel Quadrangles, New College, University of Oxford

Redevelopment works for New College to create a new living and working space in a stunning new architectural setting in Oxford.

This comprised the design and construction of a new four-storey quadrangle of student accommodation with a two-storey basement containing a hall and gallery space, and the construction of a ground floor independent study space. A section of the new building to become is a three-storey addition for the adjacent New College School - containing classrooms, a dining hall and assembly hall.



The Gradel Quadrangles



Student Union Building



The University of Leeds, Student Union Building

We worked closely with the University to minimise disruption to campus life during the phased refurbishment of its Students' Union building.

The complex refurbishment project transformed facilities and improved access and wayfinding throughout the five-storey, 11,000m² Union building which stands at the heart of the campus.

Completed in phases, the works created a unique suite of state-of-the-art venues under one roof, including modern, well-equipped theatres with increased capacity.

“

King's Buildings Library, University of Edinburgh

Providing a wide range of different types of study facilities, the new King's Buildings Library creates a sustainable and stylish focal point for science and engineering students at the University of Edinburgh.

Designed to reflect changes in student learning and featuring a high-standard of finish throughout, the new four-storey facility provides flexible and IT-rich study spaces along with a new social learning space in the form of a ground floor cafe.

Operating within a live campus environment on a site surrounded by buildings which remained in use throughout, our team liaised closely with the university to minimise disruption.



Kling's Buildings Library

Biomedical Science Research Complex



“

Biomedical Science Research Complex, University of St Andrews

Our sustainable approach to the construction of this cutting-edge research facility at the University of St Andrews helped ensure it was rated BREEAM Outstanding.

Constructed within a working campus, the highly serviced four-storey building provides 2,400m² of biological labs and 600m² of research offices for scientists working at the forefront of biomedical and biological sciences.

University of Manchester SKA Jodrell Bank



“

University of Manchester Square Kilometre Array (SKA), Jodrell Bank

A new single-storey research and administration building and associated landscape, car parking and road works connecting to the existing building. The proposed design takes inspiration from the radio waves that are at the heart of the SKA's work, while embracing its natural environment.

The building houses 135 staff, providing research and office space as well as catering facilities for the organisation that supervises the international effort to build and operate the world's largest radio telescope.

“

City Campus East, Northumbria University

The award-winning City Campus East development houses purpose-built and versatile spaces for conferences, talks, lectures and seminars hosting up to 400 people. The many rooms vary in size, enabling conference holders to offer more intimate settings for smaller group work, as well as offering an open exhibition/networking space and catering area.

These eco-friendly buildings are now part of the dramatic city skyline and provide the perfect venue to meet.

“

Sport Central, Northumbria University

The second landmark project delivered by the company for Northumbria University in Newcastle upon Tyne, Sport Central is an innovative three-storey sports centre providing state-of-the-art fitness and training facilities.

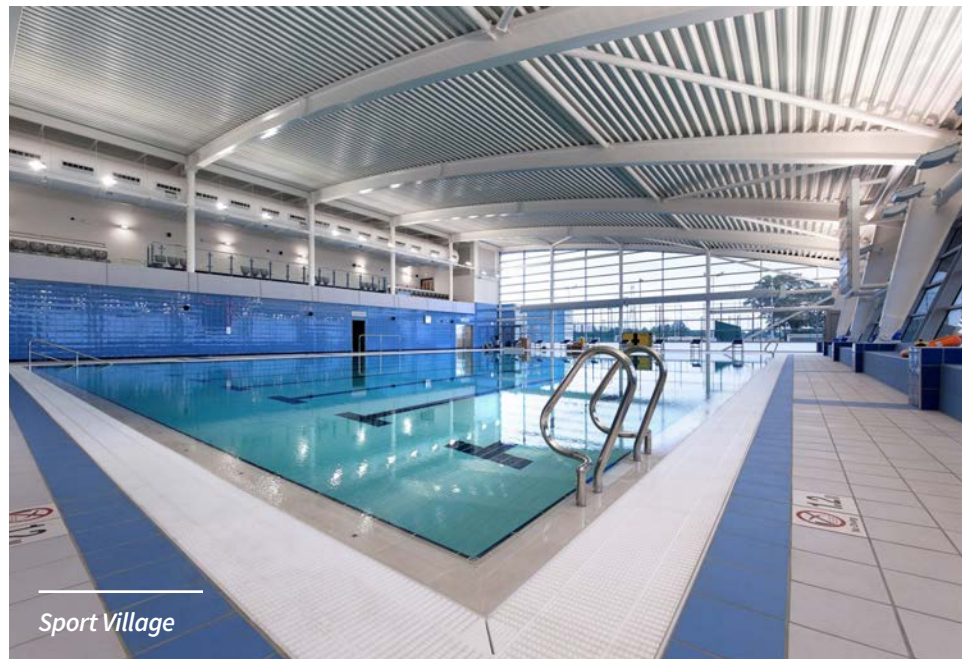
This BREEAM Excellent facility is designed for maximum flexibility with a main three-court hall capable of being adapted into a single event space. The hall can host up to 3,000 spectators on seats which can be retracted or moved out of the area as self-propelled units.



City Campus East



Sport Central



Sport Village



Sport Village, University of York

The delivery of the York Sport Village, part of the University of York's Heslington East campus expansion, highlighted our ground engineering expertise, imaginative approach to problem solving and willingness to embrace our environmental responsibilities.

Providing first-class facilities for use by students, staff and the local community, the development's centerpiece is a competition standard eight lane 25m pool.



“

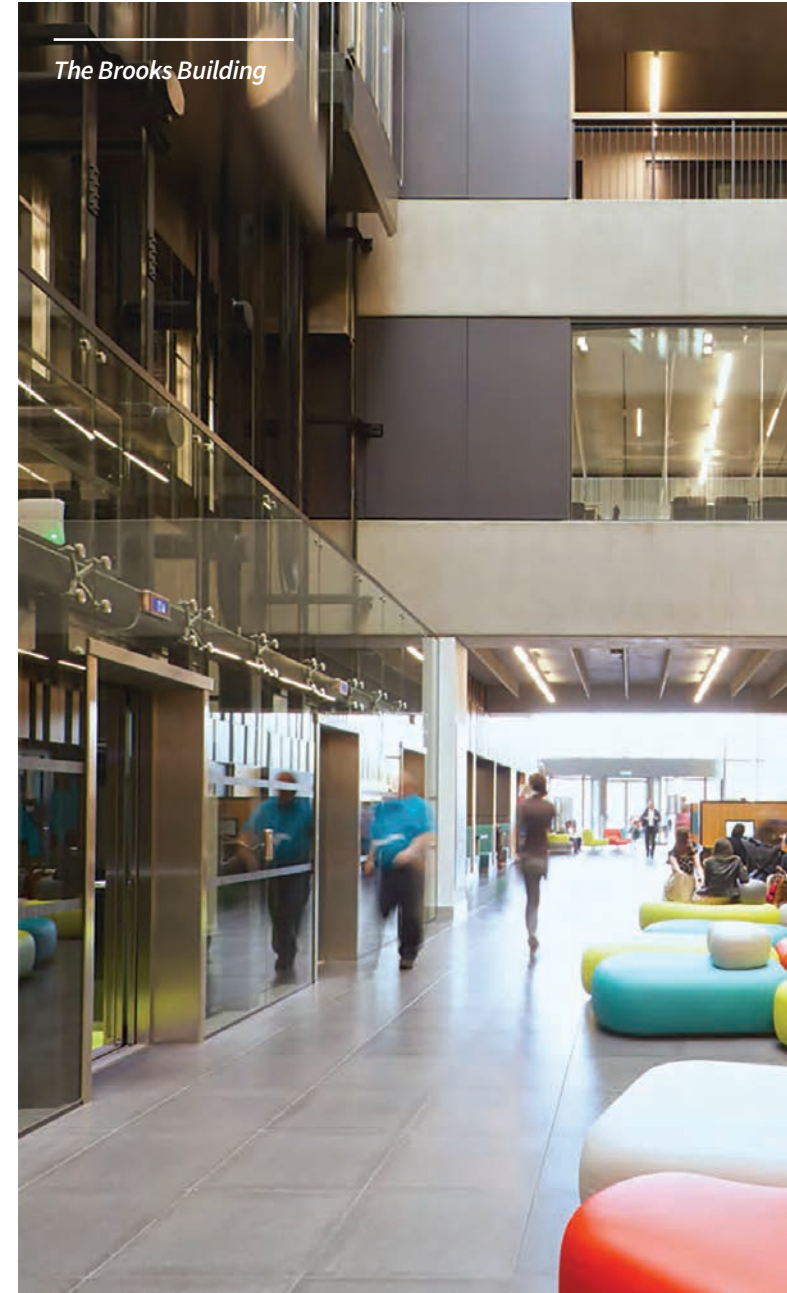
Building for their future



The Glasgow School of Art



*MMU Business School
and Business Hub*



The Brooks Building



The Forum, University of Exeter



City of Glasgow College



Leeds University Student Union Building



*Mathematical Sciences and
Computer Science Building*




**Sir Robert
McALPINE**


Sir Robert McAlpine,
Higher Education

Eaton Court
Maylands Ave
Hemel Hempstead
HP2 7TR

t: 0333 566 3444
e: hemel@srm.com

 [WeAreMcAlpine](#)

 [Sir Robert McAlpine](#)

 [WeAreMcAlpine](#)